



SmartSeat

Installation Guide

SmartSeat Installation Guide

Installing your new SmartSeat is a straightforward process similar to installing a standard toilet seat. Below is a step-by-step guide to help you set it up.

Contents:

Tools You May Need.....	1
Steps for Installation.....	1
<i>Remove Existing Toilet Seat.....</i>	<i>1</i>
<i>Position the SmartSeat.....</i>	<i>1</i>
<i>Secure the SmartSeat.....</i>	<i>1</i>
<i>Check for Stability.....</i>	<i>2</i>
<i>Initial Setup.....</i>	<i>2</i>
Installation FAQs.....	2



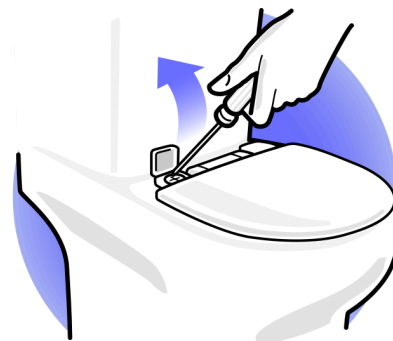
Tools You May Need:

- Phillips Screwdriver
- Adjustable Wrench

Steps for Installation:

1. Remove Existing Toilet Seat:

- a. Close the lid of your existing toilet seat.
- b. Locate the bolts at the back of the seat. (They are usually covered with plastic caps, which you will need to flip open.)
- c. Depending on the design of your toilet seat, you might be able to adjust the bolts either from above or below the seat. A screwdriver can typically be used for top adjustments, while an adjustable wrench might be needed for any adjustments or unscrewing from underneath.
- d. Once loose, remove the bolts and lift off the old seat.



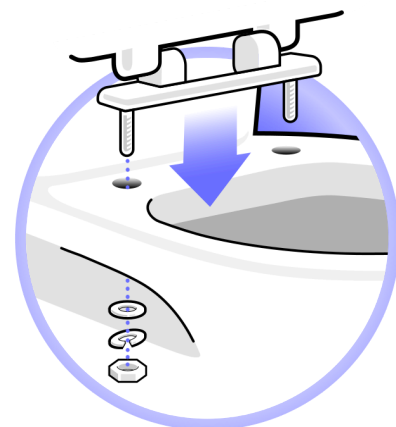
Please note that toilet seat styles vary and these instructions may not match the style of your seat. If you require assistance to remove your old seat, please contact Casana Support (support@casanacare.com).

2. Position the SmartSeat:

- a. Align your seat with the bolt holes on the toilet
- b. Ensure it is centered and straight on the toilet bowl.

3. Secure the SmartSeat:

- a. Insert the SmartSeat's bolts through the holes in the toilet bowl.
- b. Begin by placing the flat washer directly onto the bolt, ensuring it's against the toilet bowl.
- c. Follow this by positioning the split washer on top of the flat washer.
- d. Finally, tighten the nut on the bolt to lock everything in place. **Remember to use all three washers for a secure fit.**
- e. From beneath, screw on the nuts to the bolts by hand at first.
- f. Once hand-tightened, use the adjustable wrench to securely fasten the seat. *Be careful not to over-tighten, as this can crack the ceramic of the toilet.*





4. **Check for Stability:**

- a. Once the seat is attached, gently move it to ensure it's stable and does not slide or wobble. If it moves, tighten the bolts until the seat is secure.

5. **Initial Setup:**

- a. Follow the instructions in the SmartSeat User Manual or the Casana App for initial setup, Wi-Fi connection, and a setup sit.

Congratulations on successfully installing your SmartSeat!

The challenging part is now behind you. Now you can use the bathroom just as you always have, but with the added bonus of effortless health monitoring. Should you have any questions or need further assistance, feel free to reach out to our support team at support@casanacare.com.



Installation FAQs

Is the SmartSeat difficult to install?

Your SmartSeat is designed for easy installation, similar to a regular toilet seat. Clear instructions are provided, and no special tools are required. However, if you're not comfortable with the installation, we recommend asking a family member or a professional for assistance.

Will the SmartSeat fit on my existing toilet?

Currently, all SmartSeats are designed to fit elongated toilets only. Please check the measurements in our User Manual to ensure compatibility with your current toilet model.

Do I need to use tools to install the SmartSeat?

You may need basic tools like a screwdriver and an adjustable wrench, but generally, the installation process is straightforward and similar to replacing a standard toilet seat.

How do I know if my bathroom has the right electrical setup for the SmartSeat?

Your SmartSeat is completely battery-powered. You'll never have to plug it into the wall or charge it.



Can someone assist me with the installation if I'm unable to do it myself?

Of course! We recommend asking a family member or friend, or hiring a professional for installation if you need assistance. At this time, Casana does not provide an installation service.

Will installing the SmartSeat require any changes to my plumbing?

No, the SmartSeat does not require any modifications to your standard plumbing. It installs just like a regular toilet seat.

What if the seat doesn't fit or work properly after installation?

If you encounter any issues with fit or functionality, please contact our support team by emailing support@casanacare.com. We can assist with troubleshooting or advise on the next steps to ensure your SmartSeat works as intended.

How do I maintain my SmartSeat?

Maintenance of the SmartSeat is simple. Regular cleaning with non-abrasive materials is recommended. Detailed care instructions are available in the user manual.